

# HENDERSON DESIGN GROUP

## Ālia Custom Furniture Collection



## Finishing & Package Offerings - Owner/Diamond Head

Aloha,

Thank you for choosing Henderson Design Group! To move forward with your furnishing package, please review this document to 1) select furniture pieces/quantities, 2) choose finishes/fabrics, 3) pick décor/accessory package offerings. Once we receive your selections, we'll review them alongside your floor plan to ensure everything fits properly. If any adjustments are needed, we'll notify you right away.

Best Regards,  
Henderson Design Group Team

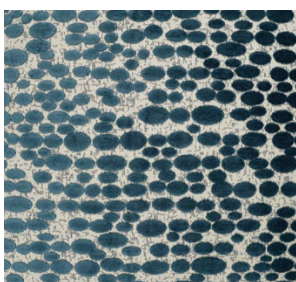
Instagram: [hendersondesigngroup](#)  
WhatsApp: (808) 315-8782   Email: [aloha@henderson.house](mailto:aloha@henderson.house)

# HENDERSON DESIGN GROUP

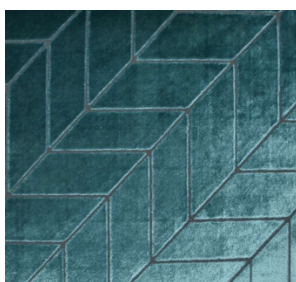
## Great Room

**Decorative Pillows:** Quantities vary based on floor plan. Fabrics subject to change based on availability – will be substituted as needed for similar option in selected color preference per package.

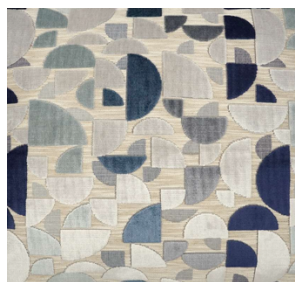
### ☐ Package A – Teal/Blue



Sofa 22"x22"

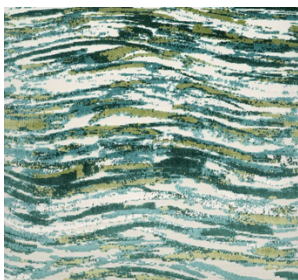


Sofa 22"x22"



Lounge Chair  
14"x 18"

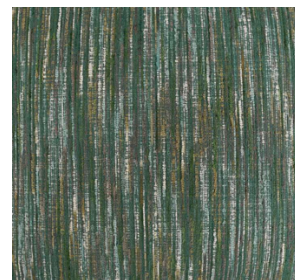
### ☐ Package B – Green



Sofa 22"x22"



Sofa 22"x22"



Lounge Chair  
14"x 18"

### ☐ Package C – Tone on Tone/Neutral



Sofa 22"x22"



Sofa 22"x22"



Lounge Chair  
14"x 18"

# HENDERSON DESIGN GROUP

## Great Room

**Modular Sofa / Sectional:** Sofa/Sectional layout will vary based on unit floor plan. Fabrics subject to change based on availability – will be substituted as needed for similar option in selected color preference.

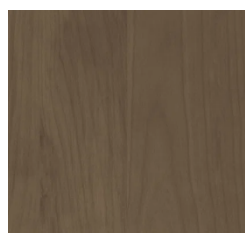


---

**Wood Base Finish** (select one):



☐ Light



☐ Dark

---

**Fabric Option** (select one):



☐ Cream



☐ Tan



☐ Beige

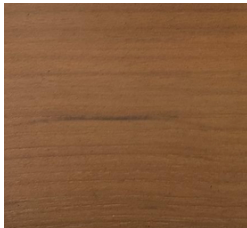
# HENDERSON DESIGN GROUP

## Great Room

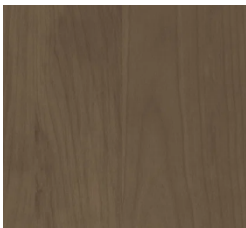
**Swivel Lounge Chair:** Quantity will vary based on unit floor plan. Fabrics subject to change based on availability – will be substituted as needed for similar option in selected color preference.



**Wood Base Finish** (select one):



☐ Light



☐ Dark

**Quantity Preference** (If applicable to layout):

**Fabric Option** (select one):



☐ Cream



☐ Tan



☐ Beige



☐ Blue

# HENDERSON DESIGN GROUP

## Great Room

**Drink Table:** Quantity will vary based on unit floor plan. Finishes as shown. Mosaic petrified wood top with powder coated metal base.



---

**Quantity Preference** (If applicable to layout):

# HENDERSON DESIGN GROUP

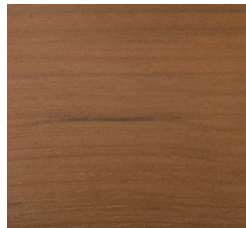
## Great Room

**Coffee Table:** Beige marble/stone top with wood base.

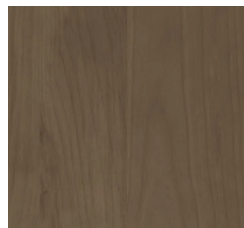


---

**Wood Base Finish** (select one):



☐ Light



☐ Dark

# HENDERSON DESIGN GROUP

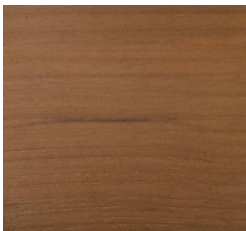
## Great Room

**Sofa Side Table:** Style option 1. Wood with 2 shelves

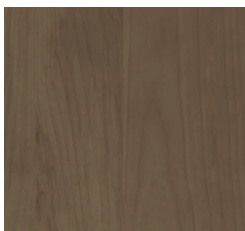


---

**Wood Finish** (select one):



☐ Light



☐ Dark

**Quantity Preference** (If applicable to layout):

# HENDERSON DESIGN GROUP

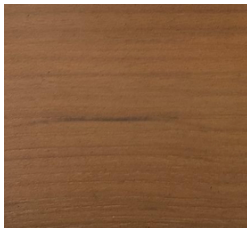
## Great Room

**Sofa Side Table:** Style option 2. Wood with bronze metal finish. Metal finish only as shown.

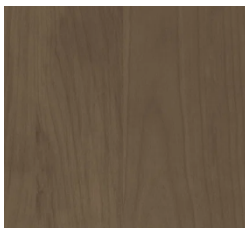


---

**Wood Finish** (select one):



☐ Light



☐ Dark

**Quantity Preference** (If applicable to layout):

# HENDERSON DESIGN GROUP

## Great Room

**Sofa Table:** Wood top with bronze resin base. Bronze resin only as shown.

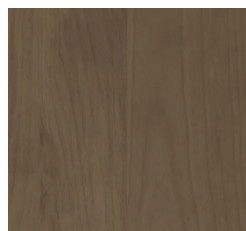


---

**Wood Top Finish** (select one):



☐ Light



☐ Dark

# HENDERSON DESIGN GROUP

## Great Room

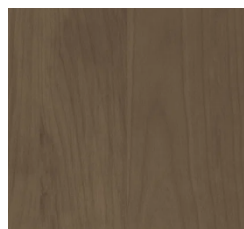
**Media Cabinet:** Style Option 1. Only for select floor plans with towers. Other floor plans to have media cabinet with no towers. Wood cabinet with wood shelves. Cream marble/stone top, bronze metal, and smoked glass finishes only as shown.



**Wood Finish** (select one):



☐ Light



☐ Dark

# HENDERSON DESIGN GROUP

## Great Room

**Media Cabinet:** Style Option 2. Only for select floor plans without towers. Other floor plans to have media cabinet with towers. Wood cabinet. Cream marble/stone top, & bronze metal finishes only as shown.

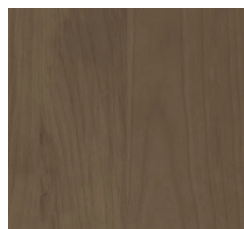


---

**Wood Finish** (select one):



☐ Light



☐ Dark

# HENDERSON DESIGN GROUP

## Throughout

**Accessories:** Select package A, B, or C. Subject to change/vary based on availability – accessory to be substituted as needed for similar option in selected package. Quantities may vary based on floor plan and not all styles may be shown.

☐ Package A – Dark



☐ Package B – Light



# HENDERSON DESIGN GROUP

## ☐ Package C – Combo Dark & Light



# HENDERSON DESIGN GROUP

## Great Room

**Wallpaper:** Subject to change based on availability – will be substituted as needed for similar option in selected color preference. Textured vinyl options shown below.

☐ Option A – Green



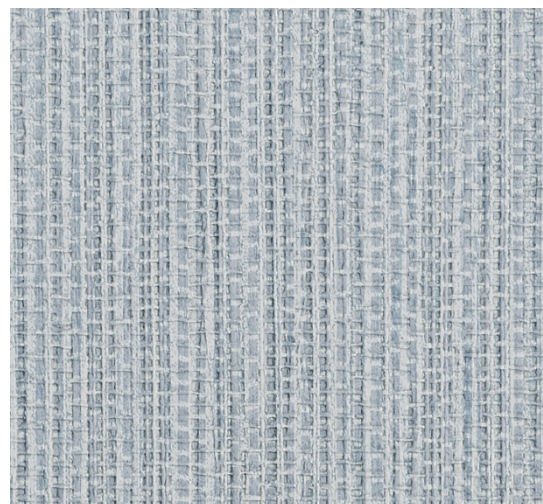
☐ Option B – Cream



☐ Option C – Tan



☐ Option D – Blue

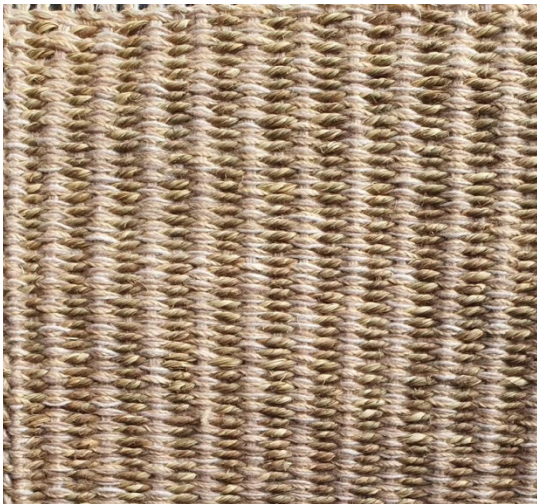


# HENDERSON DESIGN GROUP

## Great Room

**Area Rug:** Sizing will vary per floor plan.

☐ Option A – Sisal



☐ Option B – Wool



☐ Option C – Jute & Wool



☐ Option D – Sisal & Wool



# HENDERSON DESIGN GROUP

## Warranty Terms and Conditions

### **Coverage Period:**

Henderson Design Group's furniture is warranted to be free from defects in workmanship, materials, and functionality for a period of 30 days from the date of installation.

### **Scope of Warranty:**

- **Workmanship, Materials, and Functionality:** The warranty covers defects in workmanship, materials, and functionality under normal wear and tear conditions.
- **Repair or Replacement:** If a defect is identified within the 30-day period, Henderson Design Group will, at its discretion, either repair or replace the defective item. This warranty applies to normal household use only.

### **Returns and Exchanges:**

- **No Returns:** Items are not eligible for returns.
- **No Exchanges:** Exchanges are not permitted except in cases of defects as noted above.
- **Custom Items:** Custom items, including upholstery, are not eligible for returns or exchanges.
- **Non-Henderson Design Group Custom Collection Items:** Items outside of the Henderson Design Group Custom Collection are not covered by this warranty and are not eligible for returns or exchanges.

### **Exclusions:**

- **Negligence, Misuse, or Accidents:** The warranty does not cover defects resulting from negligence, misuse, or accidents after installation.
- **Maintenance and Commercial Use:** The warranty is void for any condition resulting from incorrect or inadequate maintenance, cleaning or care, or from commercial use.
- **Non-Residential Use:** The warranty is void for any condition resulting from other than ordinary residential wear or from any use for which the product was not designed.
- **Natural Material Variations:** The warranty does not cover the matching of color, grain, or texture of wood, leather, or fabrics. Wood, stone, and leather are natural materials with inherent traits and coloration variations.
- **Environmental Responses:** Wood may expand and contract in response to temperature and humidity variations, potentially causing small movements and cracks. This is a natural occurrence and not considered a defect.
- **Fabric and Leather Wear:** The warranty does not cover colorfastness, dye lot variations, wrinkling, or wear of fabrics or leather.
- **Softening of Fillings:** The warranty does not cover the softening of filling materials under normal use.
- **Sun Exposure:** Extensive exposure to the sun is not covered by the warranty.
- **Fabric Protectants:** Applying a fabric protectant to your upholstered furniture could void the Henderson warranty.

# HENDERSON DESIGN GROUP

- Original Buyer: The warranty applies to the original buyer only and covers furniture that has been installed under Henderson Design Group supervision.
- Original Installation Location: The warranty is valid only for furnishings and products in the space where they were originally installed.
- Repair, Touch-Up, or Replacement Only: Henderson Design Group policies are for repair, touch-up, or replacement only. No refunds.
- Non-Returnable Custom Upholstery: Custom upholstery is non-returnable.
- Non-Transferable Warranty: The warranty is non-transferable.

\_\_\_\_\_  
**Client (Signature Required)**

\_\_\_\_\_  
**Date**

What happens if an item arrives damaged? Please email [aloha@halebyhenderson.com](mailto:aloha@halebyhenderson.com) Or call 1-808-315-8782

#### Disclaimer Info:

-hdg does not coordinate installation or installtion of any existing furnishings or hanging of any existing artworks

– fabrics finishes accessories/decor my vary based on availability. Design intent as selected in 2024 – final materials my need to be adjusted as necessary at disccressi0n of HDG

-updates to furniture floor plan layouts provided with package will incur additional design fee. 5k design time for custom finishing packages outside of the offerings